

## Specifications



Customer Name: \_\_\_\_\_

Model: \_\_\_\_\_ 200W **CUL/UL Listed** LED Flood light Series \_\_\_\_\_

Product Code: \_\_\_\_\_ STL-200BW1-C/BW2-C/BN1-C/BN2-C/BC1-/BC2-C \_\_\_\_\_

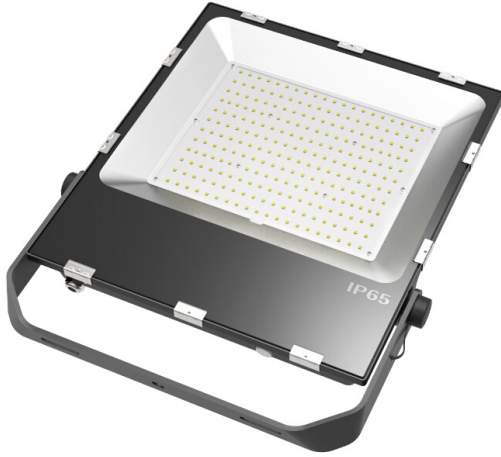
Color: \_\_\_\_\_ Warm white / Neutral white / Cool White \_\_\_\_\_

Operating Voltage: \_\_\_\_\_ 100-277VAC 50/60Hz \_\_\_\_\_

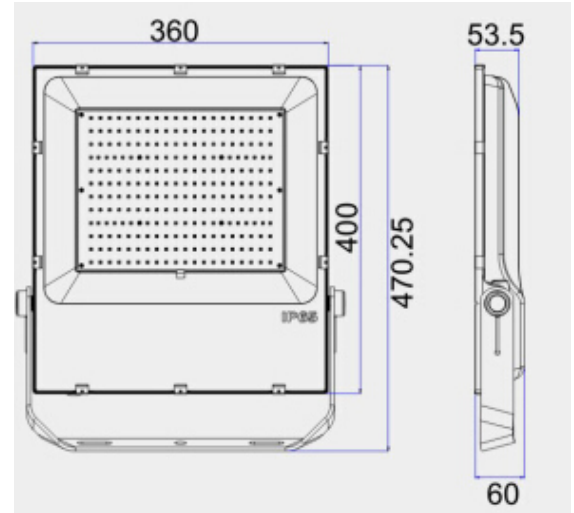
Customer Acknowledges: \_\_\_\_\_ Date: \_\_\_\_\_

Made by:	Maze	Verified by:	Power	Date :	2016-5-14
----------	------	--------------	-------	--------	-----------

**Picture of real products**



**Dimension (mm)**



## ● Features

Item	Parameter range
Power	200W (Sosen Driver)
LED Quantity	240PCS Philips 3030 SMD
Color	Warm white/ Neutral white / Cool white
CCT	3000K/3500K/4000K/4500K/5000K/5700K
CRI	≥75
Life-span	≥50,000 Hours
Flux	26,000 +/- 100LM
Beam Angle	120°
Material	Aluminum + Toughened glass
Net Weight	MAX 6.0KG/PC
Gross Weight	MAX 8.3KG/PC
Inner box Dimension	55.5*46*13.5CM
Outer carton Dimension	58*50*32CM
Package Spec.	2PCS/CTN, 16.6KG/CTN

## ● Technical request

item	units	Parameter range
working environment	°C	-37°C - 55°C
Working Humidity		≤95%
storage condition	°C	-40°C~80°C
limited voltage	V	100-277VAC 50/60Hz
Input current	A	0.72-2.00
Protection Level	IP65 (Outdoor using)	

## ● Features

Integrated applications of LED light source, the unique circuit control design, reached a high efficiency and energy saving of more than 80%.

Ultra-high brightness, high color-rendering index, is the latest type of outdoor lighting products, long life ( $\geq 50,000$  hours).

## ● Applications

It is mainly used for outdoor flood lighting, sport field lighting, building decoration lighting, industrial lighting, advertising lighting, and can be used for road lighting.

## ● Attentions

1. Please use the correct power supply.
2. Please read the product installation manual carefully before using the products.